

EXOSOFT tip of the week

Exosoft EziView

EziView is an easy to use, yet powerful end user data entry, reporting and graphing tool.

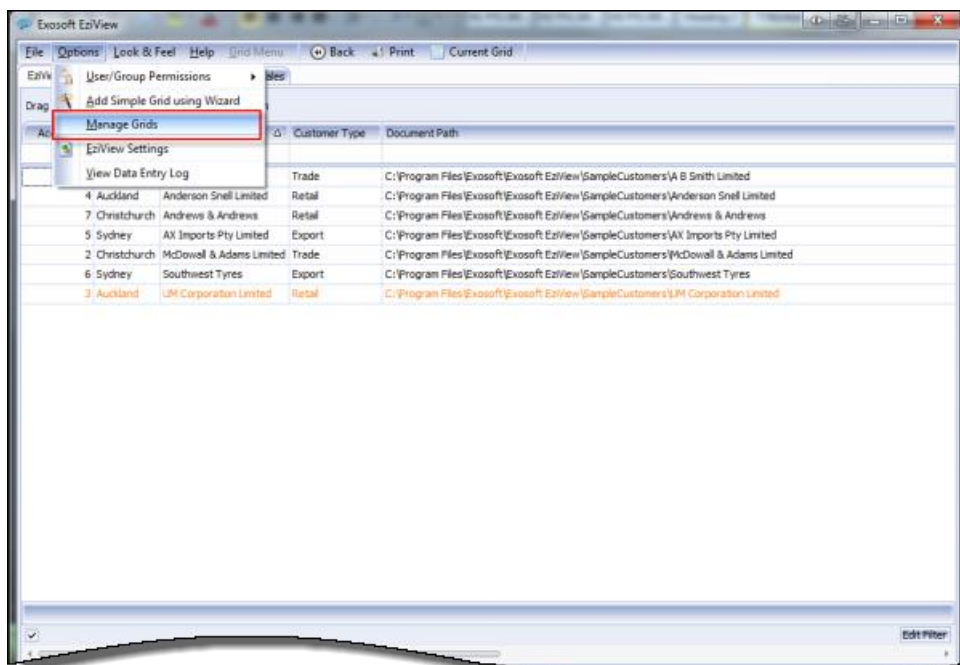
It simplifies the creation of custom information displayed on what is referred to as grids from any database. It has been built to be easily configurable and manageable by end-users.

For those who are not familiar with EziView then please check out our website:
<http://www.exosoft.net.nz/Group.aspx?gid=32#EZVW>

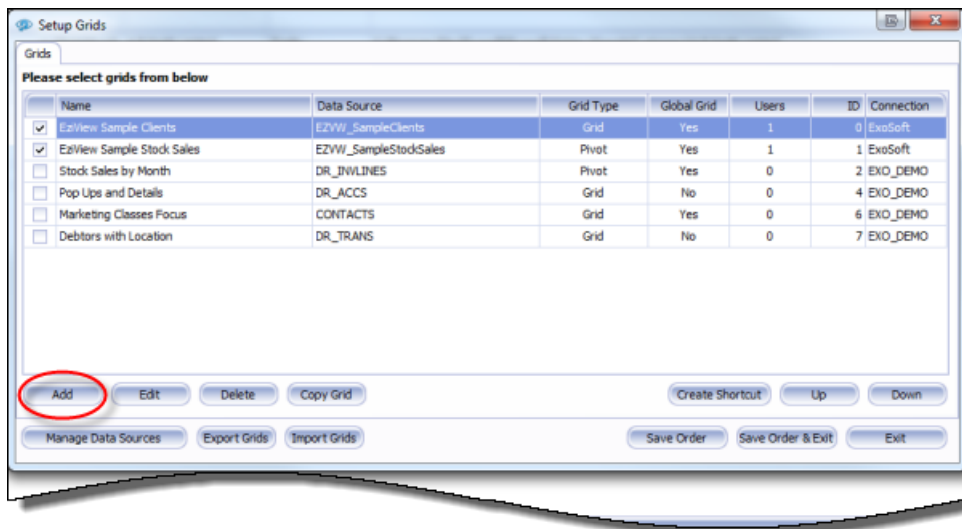
This tip of the week will show you how to create a basic EziView Grid.

Open EziView.

Go to **Options** and then **Manage Grids**.



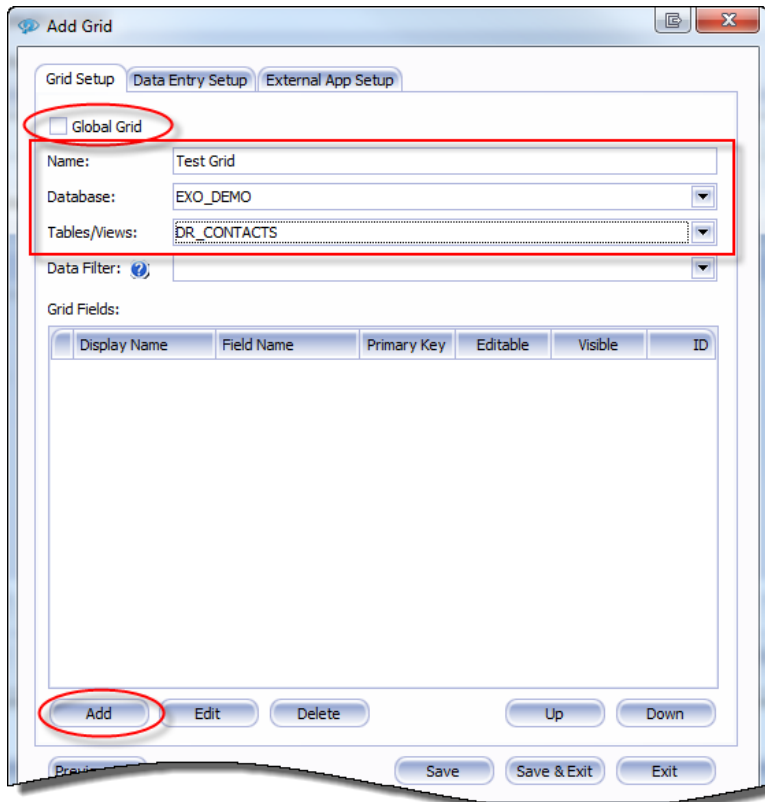
A screen like this will pop up, select **Add**.



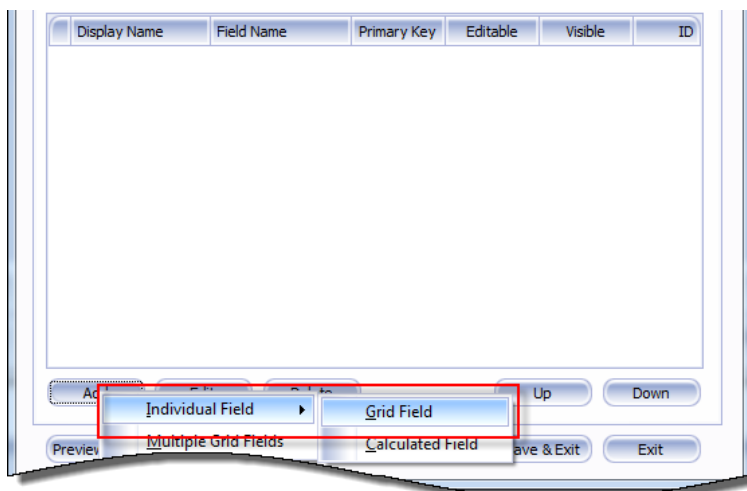
If you would like your grid visible to all EziView users then tick **Global**.

Name your grid.

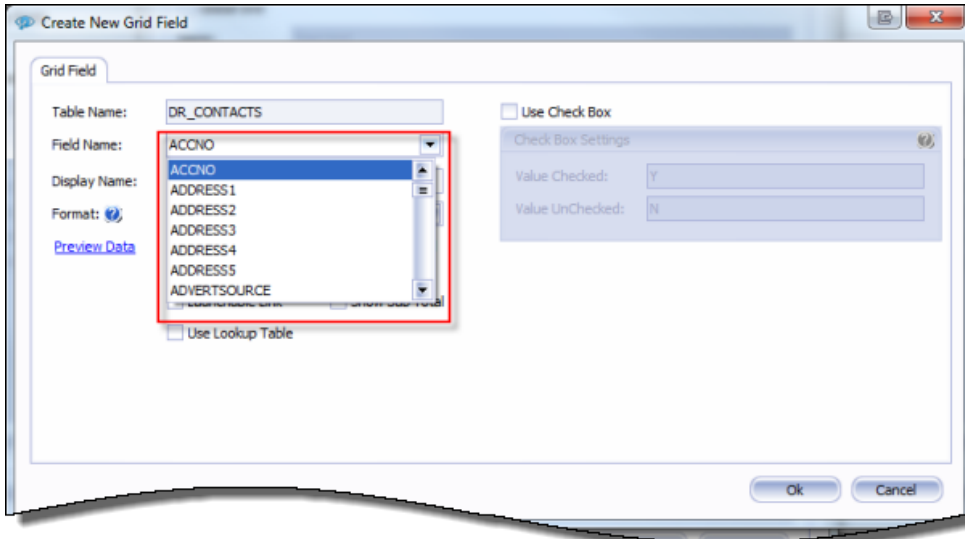
Select the Exonet **Database** and which **Table** or **View** within the Database that holds the information you want.



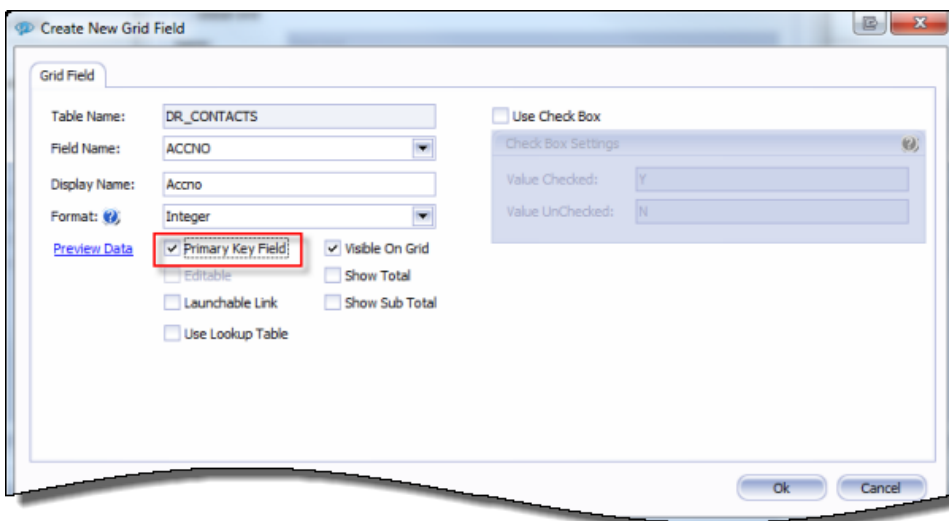
At the bottom of that screen select which fields you want to add by clicking on **Add**, then **Individual Field** and **Grid Field**.



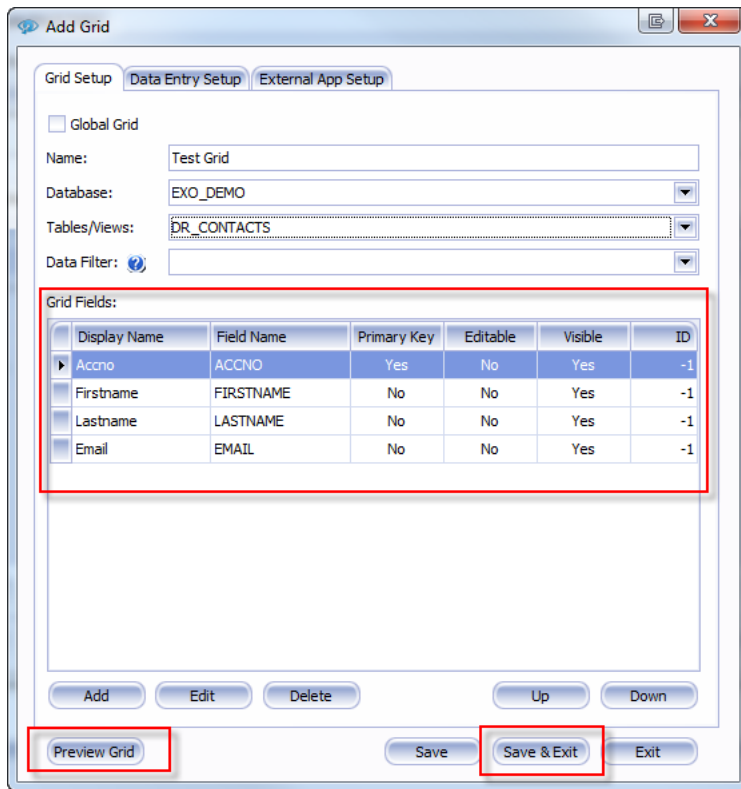
You will get this screen:
In here choose the information you want to display.



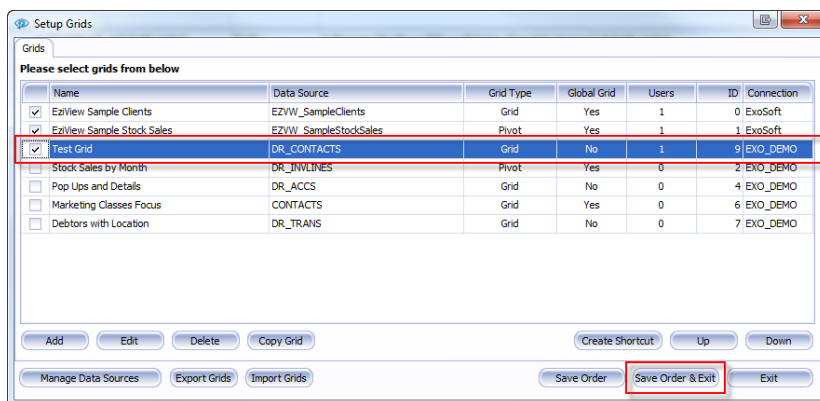
One field will have to be the **Primary Key** for the Grid; this is usually the first item on the drop down list. You can select this field and untick **Visible on Grid** if you do not want it on the Grid.



Once the grid has the required data fields, select **Preview Grid** to make sure it displays the correct information. Once it is perfect choose **Save and Exit**.



The new grid will show on the Grids screen, ticked. Select **Save Order & Exit**.



You will be taken back to the main grid screen, select the new grids' tab to view the information.

If you would like to make more changes or add more data fields then click on the tool icon beside the name on the tab and choose **Grid Setup** to continue.

